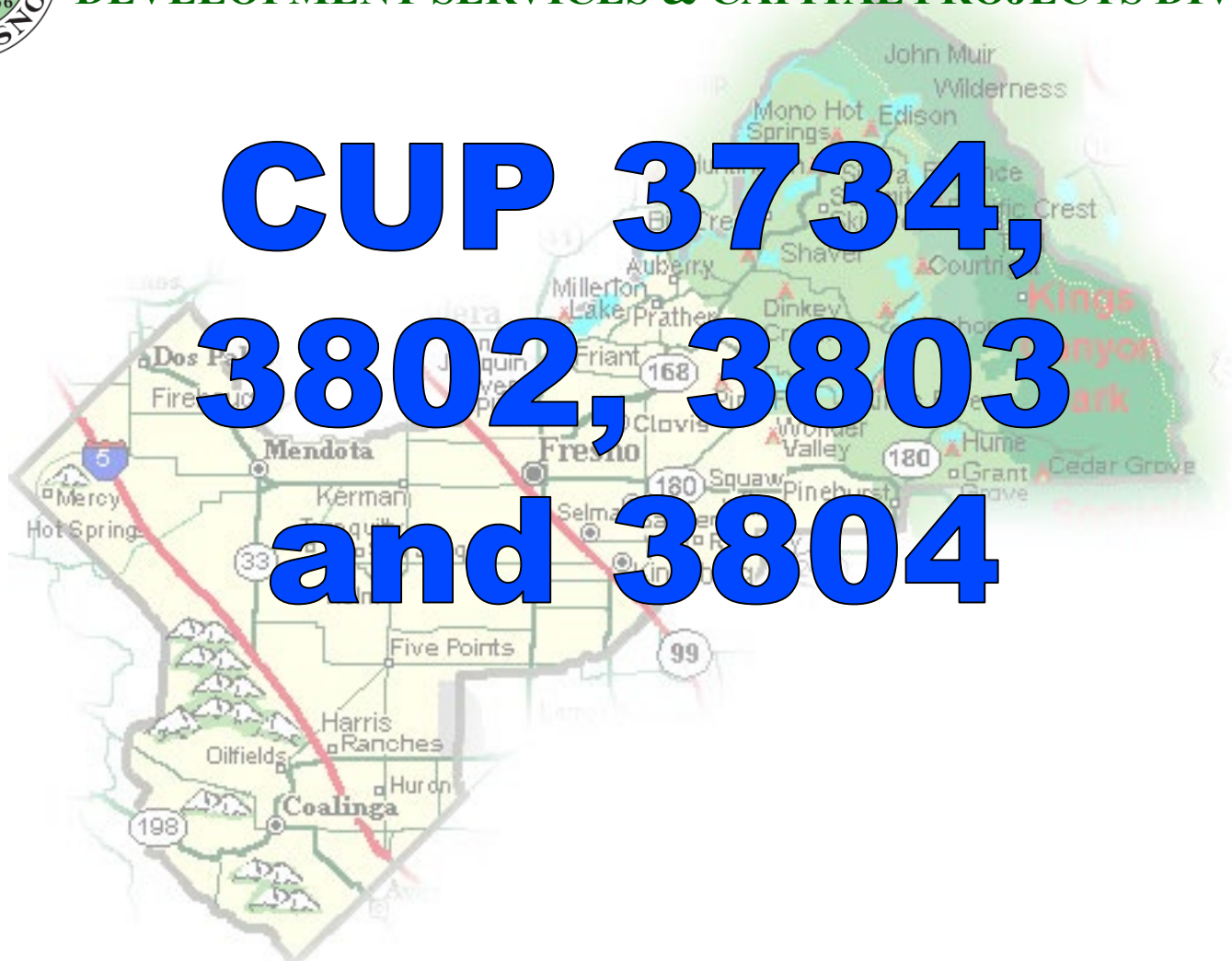


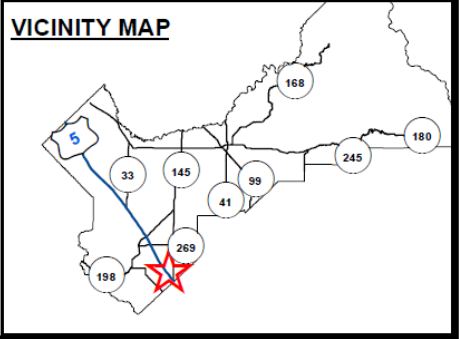
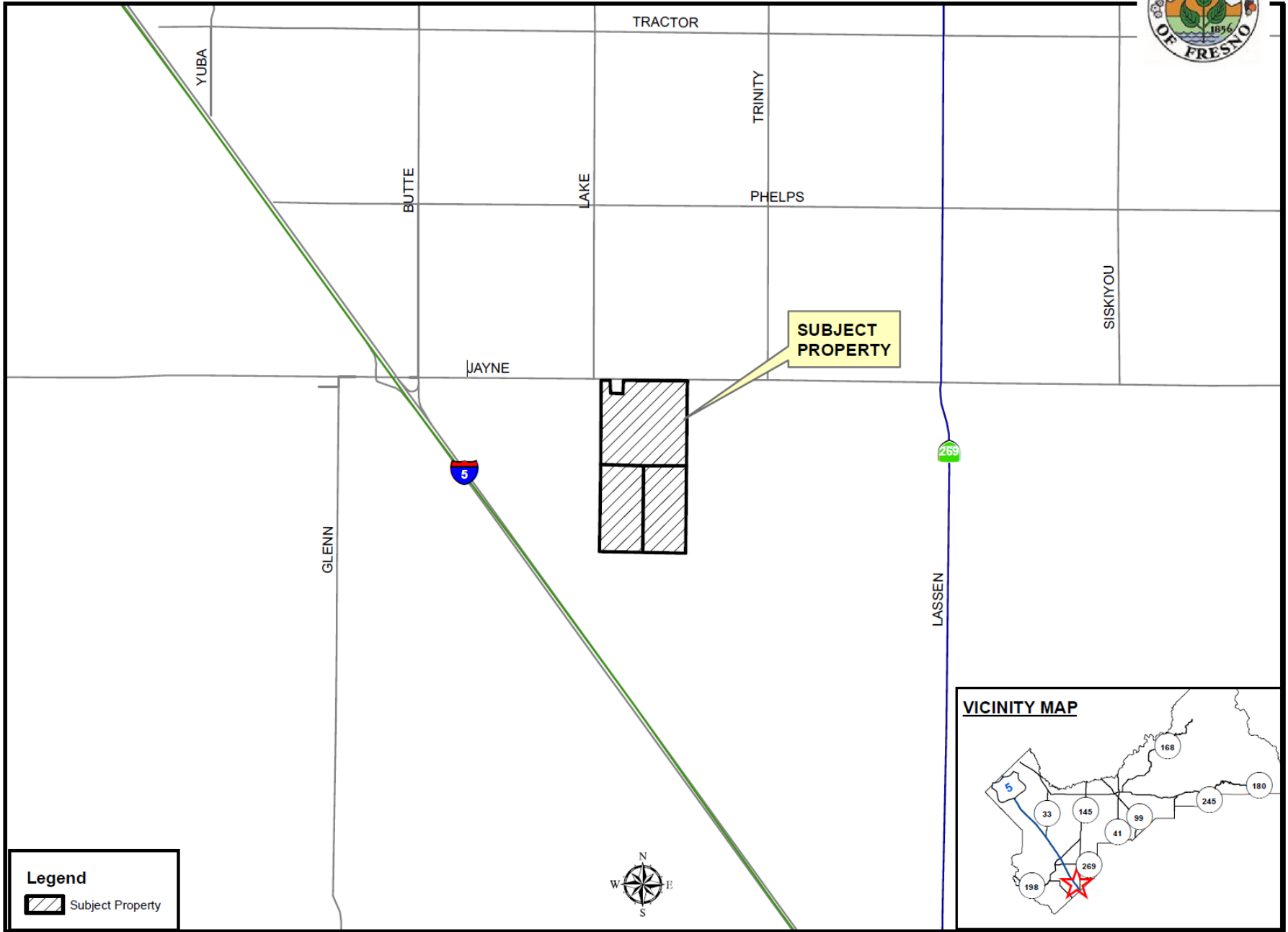


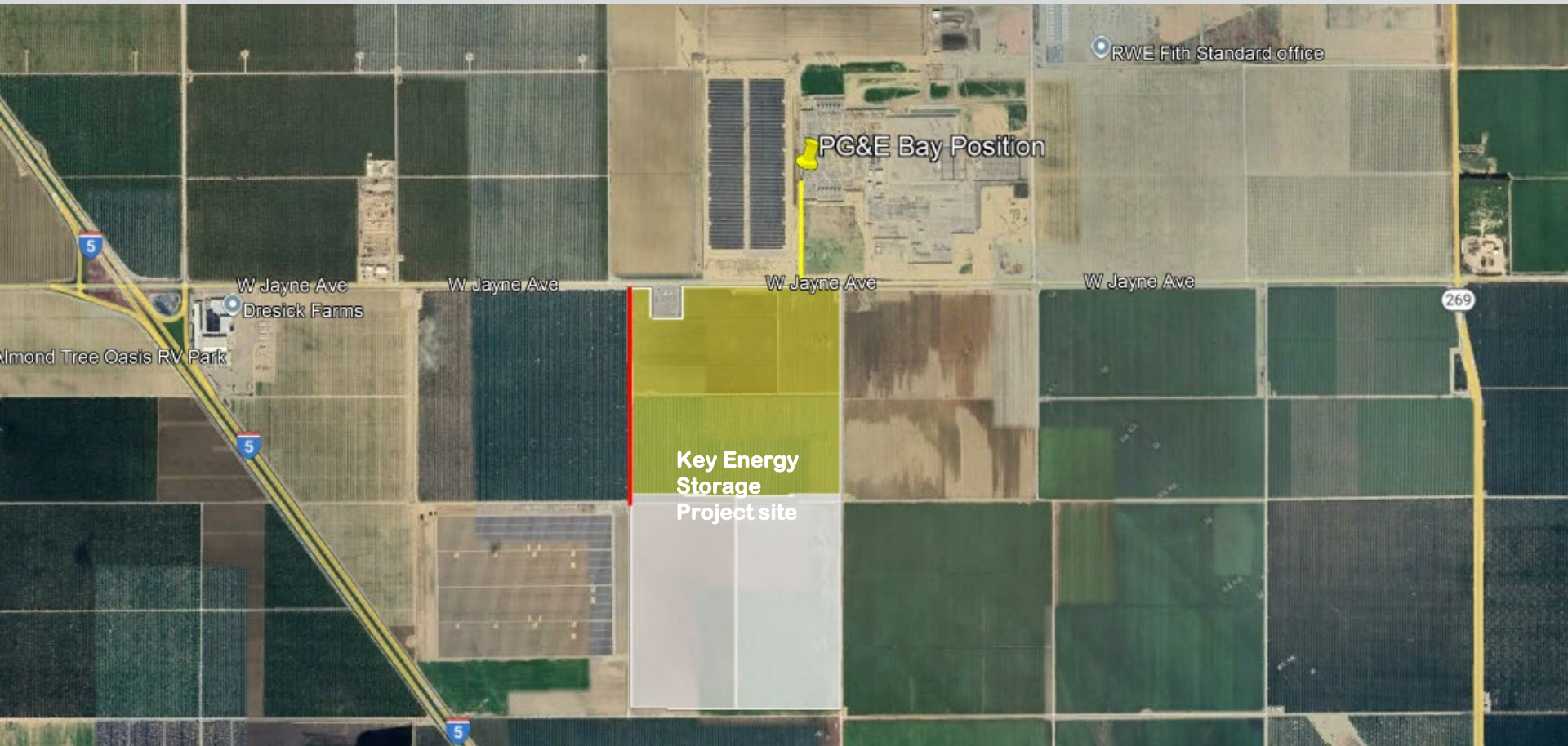
**DEPARTMENT of PUBLIC WORKS and PLANNING**  
**DEVELOPMENT SERVICES & CAPITAL PROJECTS DIVISION**

**CUP 3734,  
3802, 3803  
and 3804**



# LOCATION MAP





RWE Fith Standard office

PG&E Bay Position

W Jayne Ave  
Drestick Farms

W Jayne Ave

W Jayne Ave

W Jayne Ave

269

Almond Tree Oasis RV Park

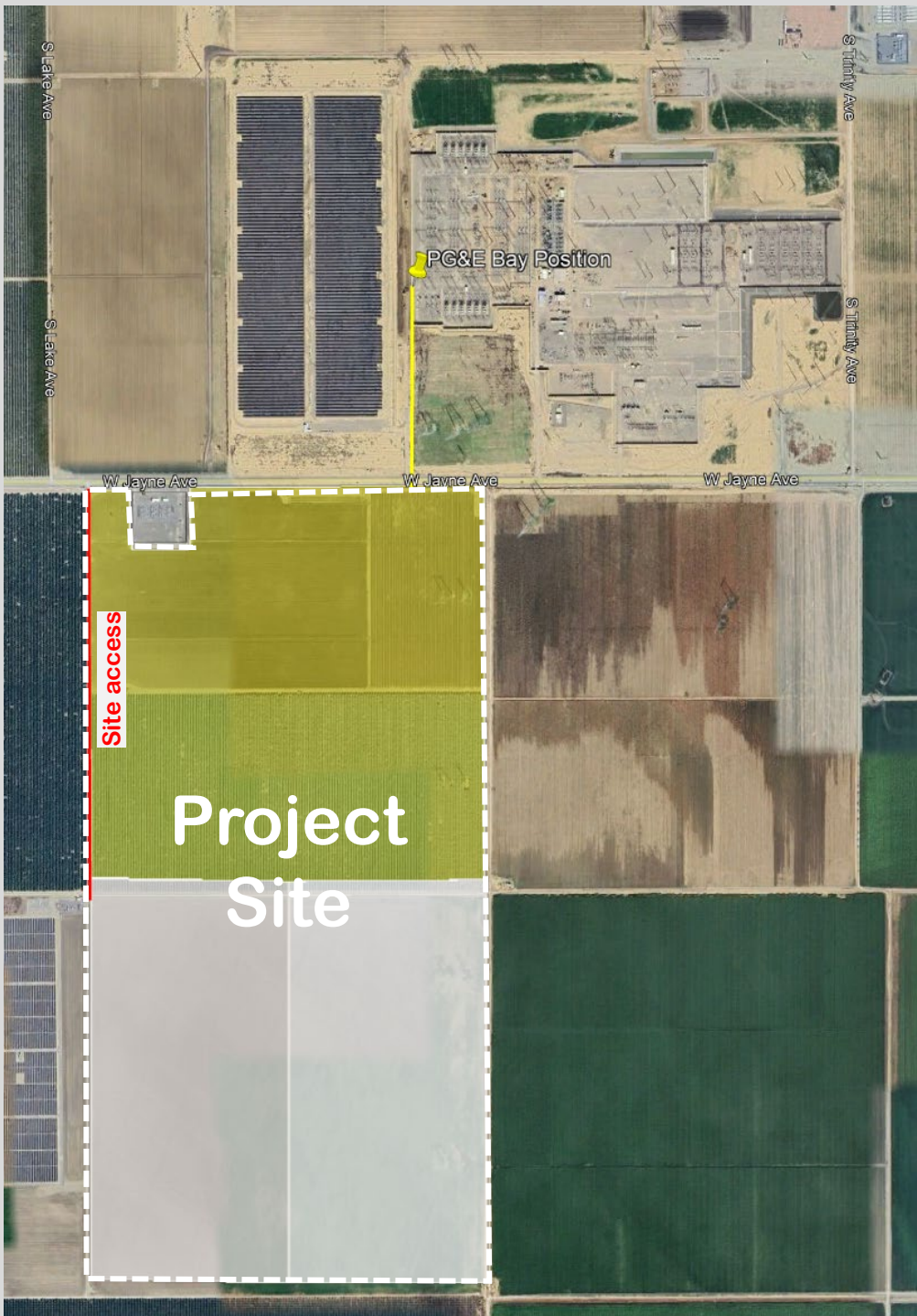
Key Energy  
Storage  
Project site

5

5

5





S Lake Ave

S Lake Ave

S Trinity Ave

S Trinity Ave

PG&E Bay Position

W Jayne Ave

W Jayne Ave

W Jayne Ave

Site access

Project Site



Findings	Description	Findings Met
1	<b>Size and shape of parcel is adequate to accommodate the use.</b>	YES
2	<b>Streets and highways are adequate for proposed use.</b>	YES
3	<b>No adverse effect on surrounding neighborhood.</b>	YES
4	<b>General Plan consistency.</b>	YES



# Recommended Planning Commission motions

1. Determine that the Final EIR (FEIR) was reviewed and considered by the Planning Commission, and represents the independent judgement;
2. Move to adopt the California Environmental Quality Act (CEQA) Findings of Fact and certify that Environmental Impact Report (EIR) No. 8189 prepared for the Key Energy Storage Project, consisting of Unclassified Conditional Use Permit (CUP) Application Nos. 3734, 3802, 3803 and 3804, as complete and adequate in conformance with California Environmental Quality Act;
4. Move to determine that the required Findings can be made based on the analysis in the Staff Report; and move to approve Unclassified Conditional Use Permit Application Nos. 3734, 3802, 3803 and 3804 subject to the Mitigation Measures, Conditions of Approval, and Project Notes listed in Exhibit 1, **with the additional the four recommended Conditions of Approval; (4-7).**
4. Direct the Secretary to prepare a Resolution documenting the Commission's action and direct staff to file a Notice of Determination for the Project.



**DEPARTMENT of PUBLIC WORKS and PLANNING**  
**DEVELOPMENT SERVICES & CAPITAL PROJECTS DIVISION**

**CUP 3734,  
3802, 3803  
and 3804**

