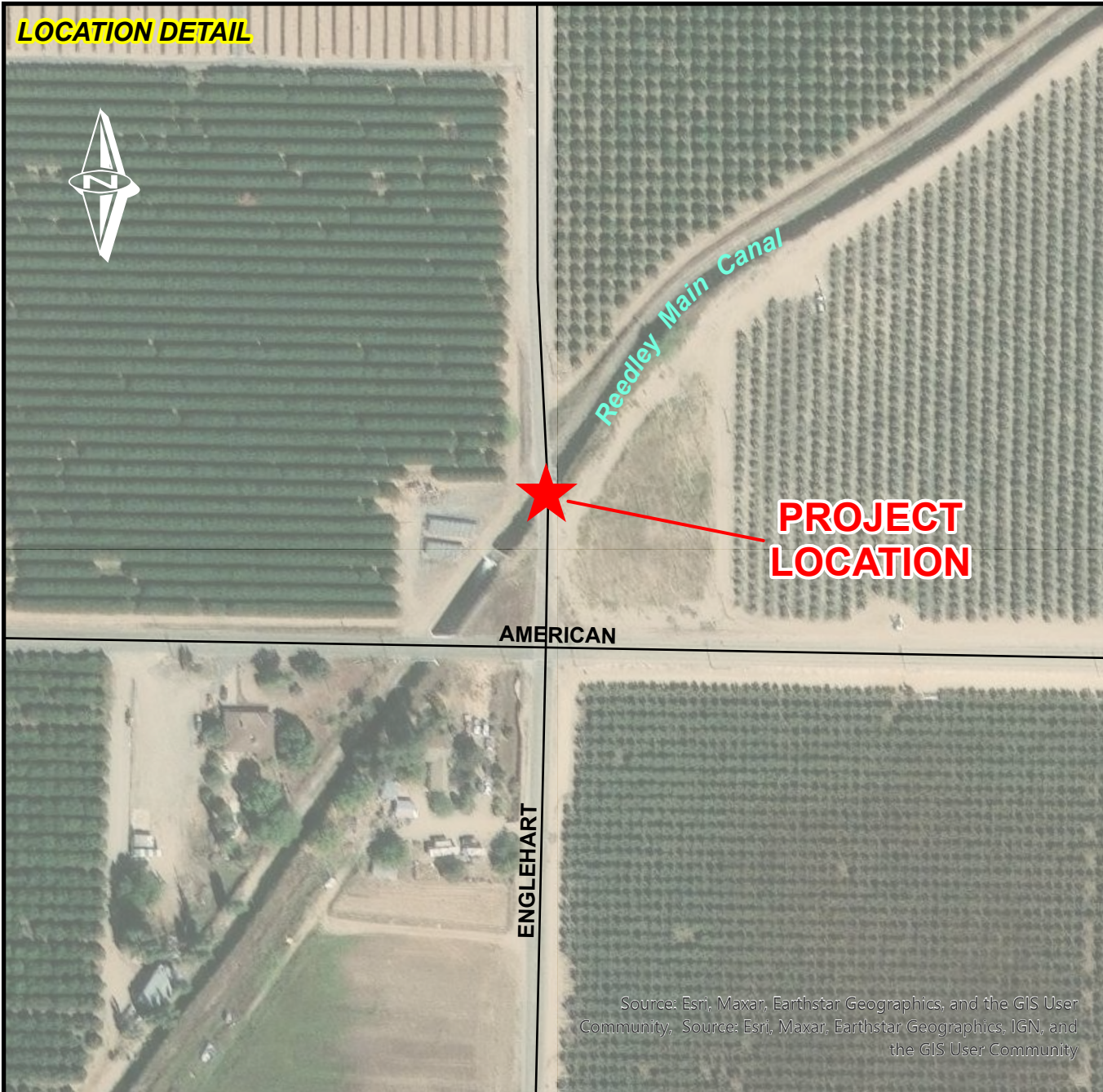


**LOCATION DETAIL**



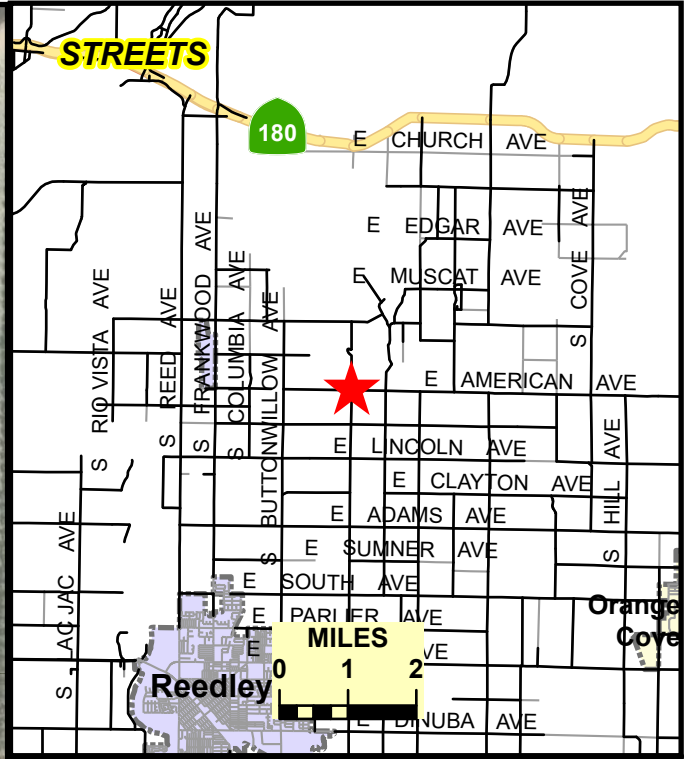
Reedley Main Canal

**PROJECT LOCATION**

AMERICAN

ENGLEHART

Source: Esri, Maxar, Earthstar Geographics, and the GIS User Community, Source: Esri, Maxar, Earthstar Geographics, IGN, and the GIS User Community



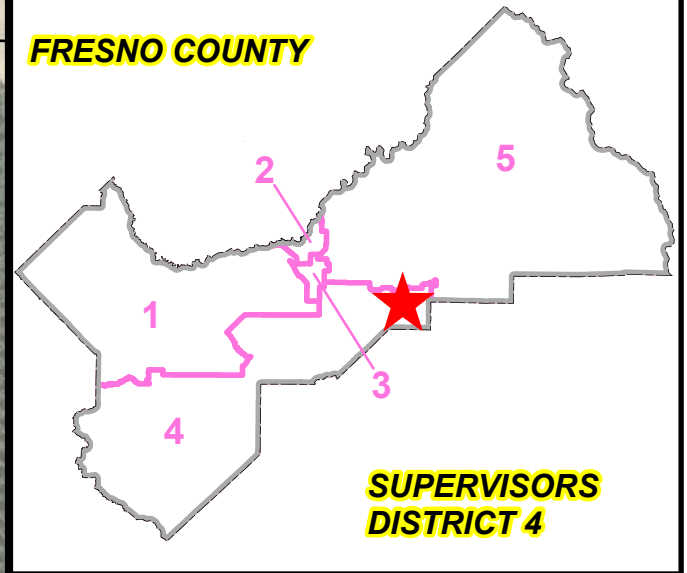
**STREETS**

180

MILES  
0 1 2

Reedley

**FRESNO COUNTY**



**SUPERVISORS DISTRICT 4**

	<b>DATE:</b>	<b>SCALE IN FEET</b>
DESIGNED: D.N.	05/08/2024	
DRAWN: D.N.	05/08/2024	
STATE BRIDGE NO. 42C0276		

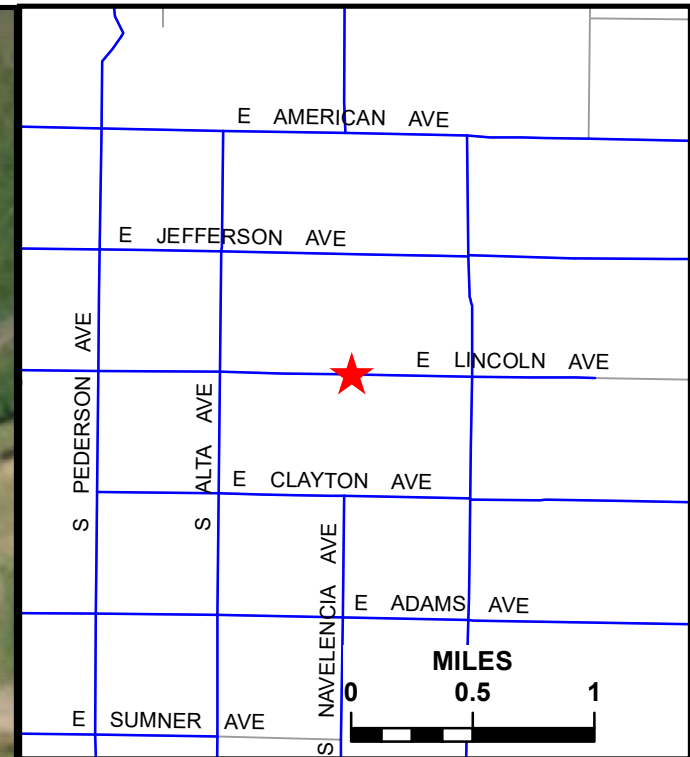


*DEPARTMENT OF PUBLIC WORKS & PLANNING*

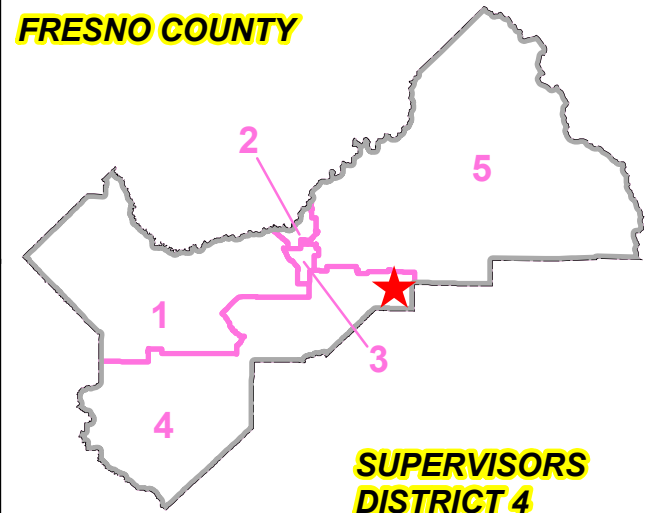
**REEDLEY MAIN CANAL BRIDGE REPLACEMENT ON ENGLEHART AVENUE**



**LOCATION DETAIL**



**FRESNO COUNTY**



**SUPERVISORS DISTRICT 4**

Source: Esri, DigitalGlobe, GeoEye, Earthstar Geographics, CNES/Airbus DS, USDA, USGS, AeroGRID, IGN, and the GIS User Community

	DATE:	SCALE IN FEET
DESIGNED: D.N.	06/25/21	
DRAWN: D.N.	06/25/21	
STATE BRIDGE NO.	42C0413	

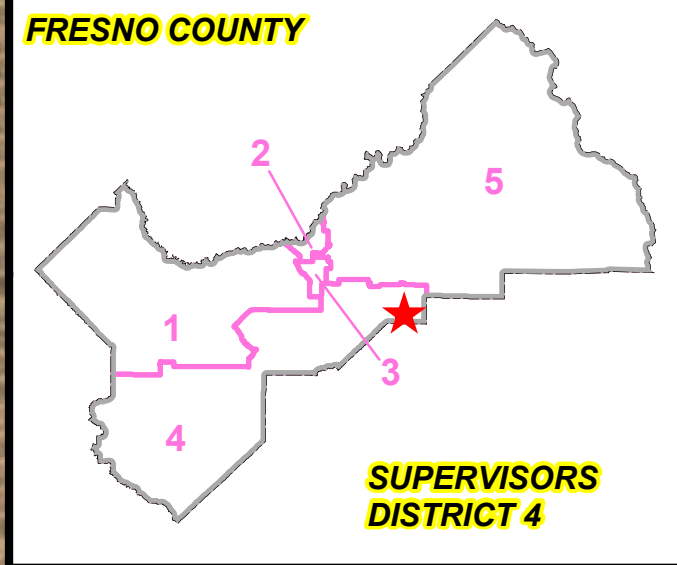
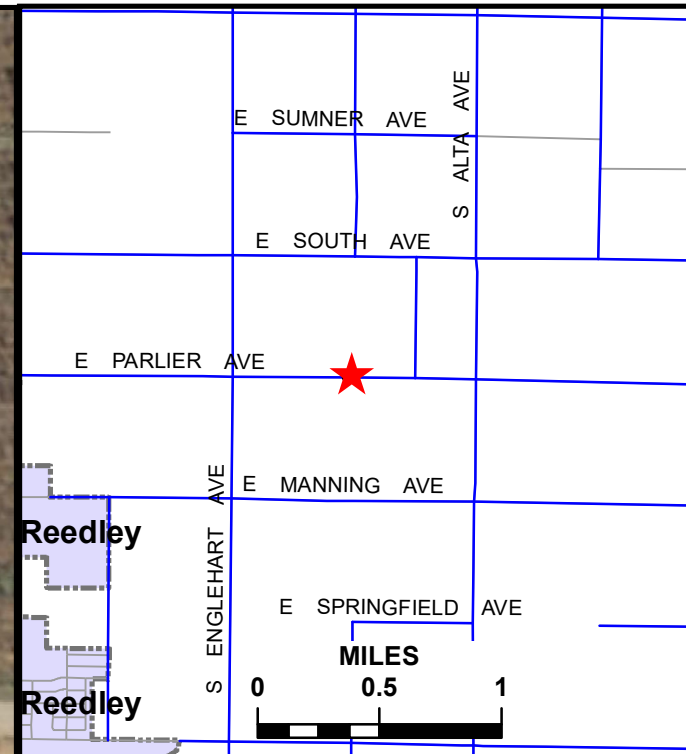
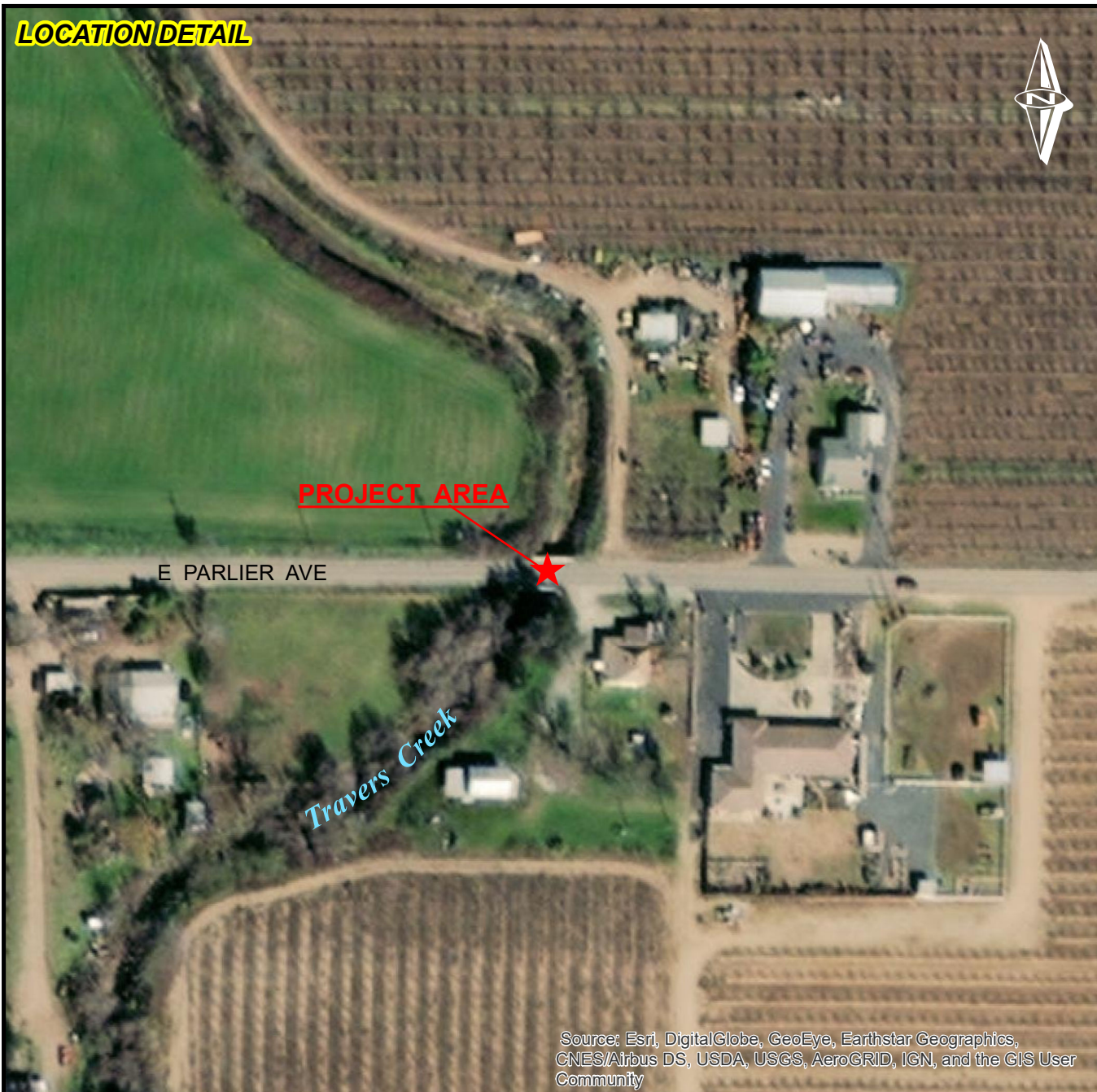


DEPARTMENT OF PUBLIC WORKS & PLANNING

**HIGHWAY BRIDGE PROGRAM  
LINCOLN AVENUE BRIDGE REPLACEMENT  
OVER TRAVERS CREEK BRLO-5942(226)**



**LOCATION DETAIL**



Source: Esri, DigitalGlobe, GeoEye, Earthstar Geographics, CNES/Airbus DS, USDA, USGS, AeroGRID, IGN, and the GIS User Community

	DATE:	SCALE IN FEET
DESIGNED: D.N.	06/25/21	
DRAWN: D.N.	06/25/21	
STATE BRIDGE NO.	42C0417	



*DEPARTMENT OF PUBLIC WORKS & PLANNING*

**HIGHWAY BRIDGE PROGRAM  
PARLIER AVENUE BRIDGE REPLACEMENT  
OVER TRAVERS CREEK BRLO-5942(227)**