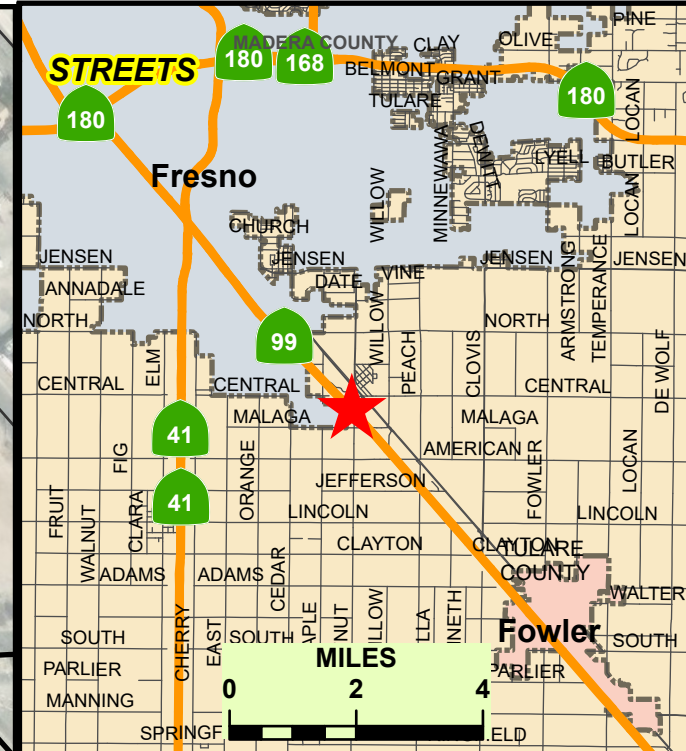
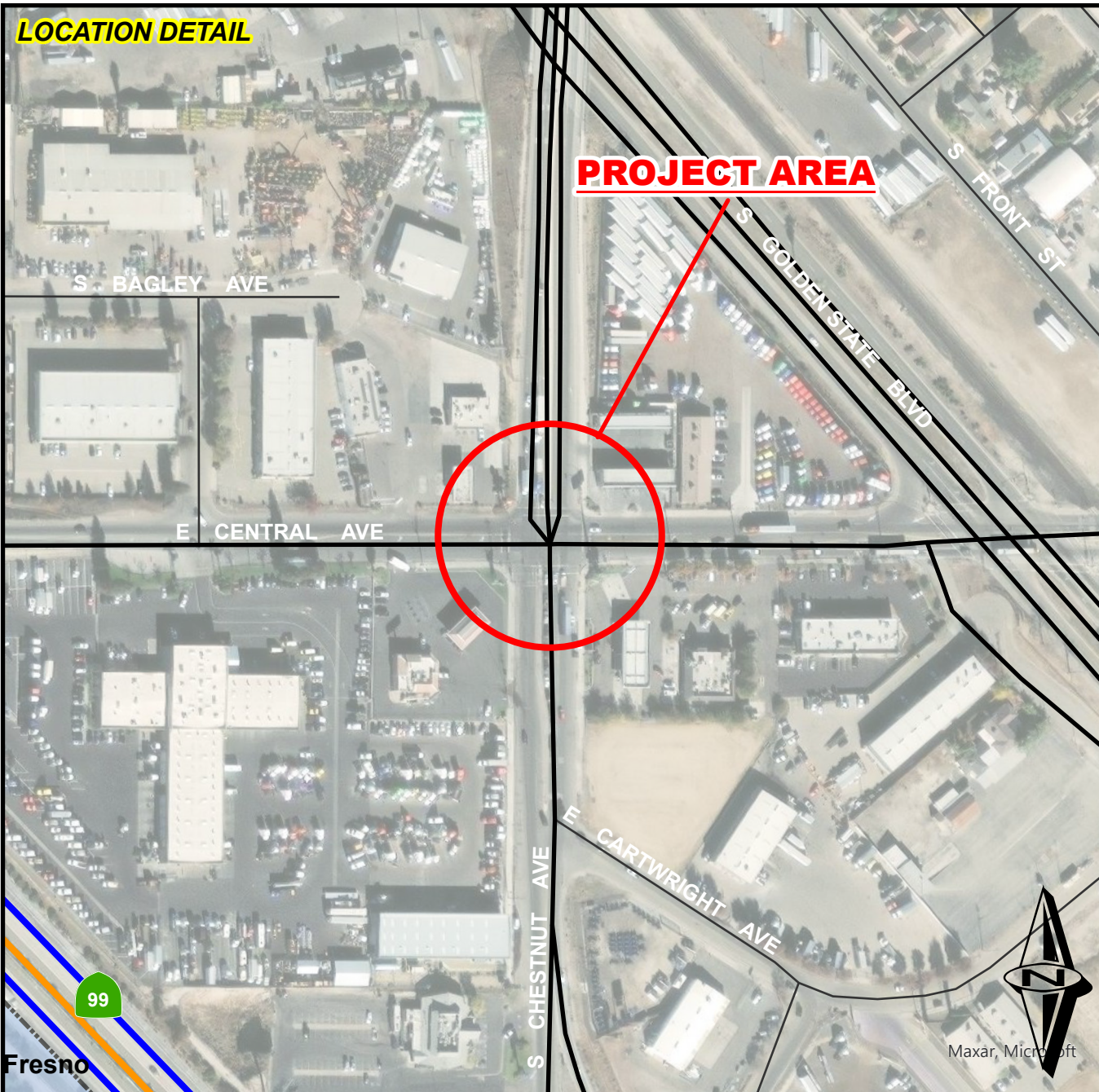
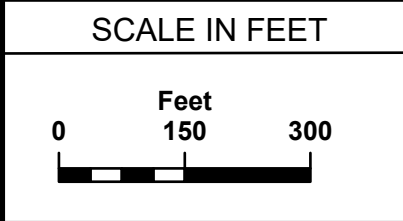


**LOCATION DETAIL**



Prepared By: Diana Nuttman, Staff Analyst  
 Date: 09/06/2024 (revised)  
 Agency: County of Fresno  
 Department: Public Works & Planning  
 Division: Design



*DEPARTMENT OF PUBLIC WORKS & PLANNING*

**ATTACHMENT C  
 CENTRAL AVE & CHESTNUT AVE  
 TRAFFIC SIGNAL MODIFICATIONS**

2220 TULARE STREET, 6TH FLOOR, FRESNO, CA 93721  
 Phone: (559) 600-4109 | Fax: (559) 600-4544